

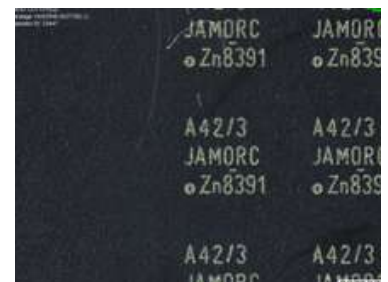
Hawk Eyes II

Hawk Eyes II

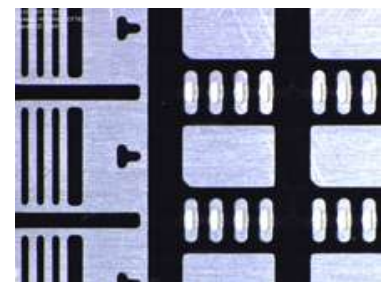
QFN Mark Mis-alignment Inspection by dual visions



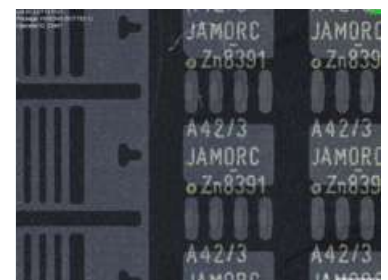
Software HMI



Top mark insp.



Lead insp.



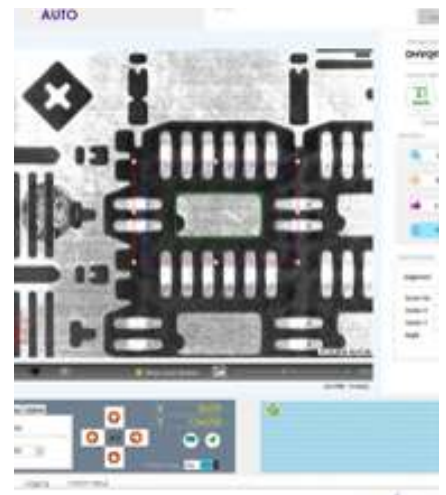
Merge Results

Model: Hawk Eyes II

Hawk Eyes II

Specifications

Configuration	Stand-alone	
CCD Cameras	5MP CCD GigE /Tele centric lens include Illumination system	Top and Bottom CAM
Loader module	Manual loading + Jig package conversion	
Actuators	XY Indexer	Hybrid Stepper Motor + Ball Screw Drive
Motion Controller	PCI motion card	2 axis Pulse Train
	Parameters	Motion profile (Speed, Acc, Dec), On the fly adjustment
Performance	XY Accuracy XY Repeatability	*/- 20 micron +/- 40 micron
Controller	Host Operating System Monitor Human Interface	Industrial PC / Intel core i5, Fanless, SSD and RAM 4GB Window 7 Pro 64bit Dell 23" IPS Mouse / Mini Keyboard Touch screen (optional)
Utility	Electrical	220Vac, 50Hz, 10 Amp



190523_01_SMC_EN

The nixma group makes every effort to maintain the accuracy and quality of the information provided in this document. However, nixma cannot guarantee and assumes no legal liability or responsibility for the accuracy or completeness of the information provided in this document.

The information contained on this document is for general guidance only. You should neither act, nor refrain from action, on the basis of any such information. You should take appropriate professional advice on your particular circumstances because the application of our equipment may vary depending on particular circumstances.

The copyright of all content on this document is owned by nixma and / or the various manufacturers of our equipment. No part of this document may be changed, reproduced, stored in or transmitted on any website or medium without the prior written permission of nixma. Requests to republish any material must be sent to communications@nixma.com